



Predictive Sensor Technology

Wireless Condition Monitoring

www.PSensorTech.com

(888) 295-5321

316 North Main Street, Lynchburg, Ohio 45142

Ethernet Receiver with Integrated POE PST-Rx.E

Description

900 MHz Ethernet receiver housed in an extruded and anodized aluminum enclosure with integrated mounting flanges. Built-in power-over-ethernet can be enabled with the flip of a switch. Each receiver can handle up to 150 transmitters. A single iStatus network can manage up to 64 ethernet receivers. Receivers can be configured via telnet or supplied software interface. DHCP or static IP addressing options can be chosen.

Security

The iStatus Wireless sensor system is inherently secure. The simple transmitter/receiver architecture cannot be reconfigured to act as anything other than its intended function. The network receiver is hard coded to simply pass packeted information to a location on the network. The receiver is not capable of wireless transmission.

Receiver

Temperature Range	-40°F to 185°F (-40°C to 85°C)
Radio Frequency	902 to 928 digitally modulated spread spectrum radio
Voltage	9 to 50 VDC
Current	300 mA max



Predictive Sensor Technology

Wireless Condition Monitoring

www.PSensorTech.com

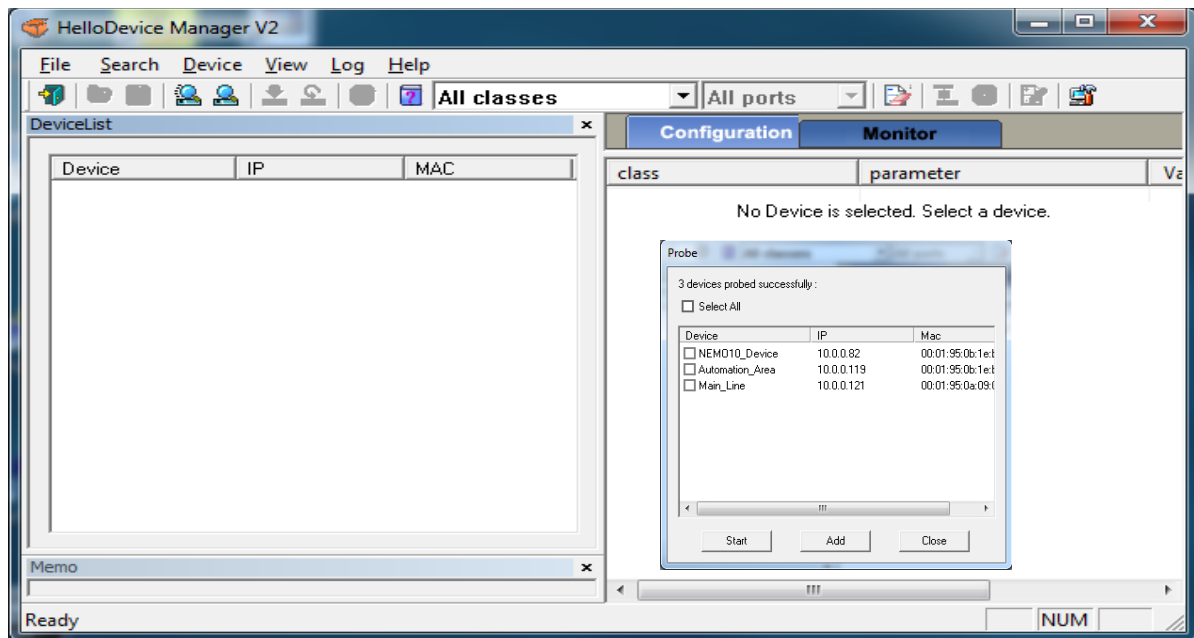
(888) 295-5321

316 North Main Street, Lynchburg, Ohio 45142

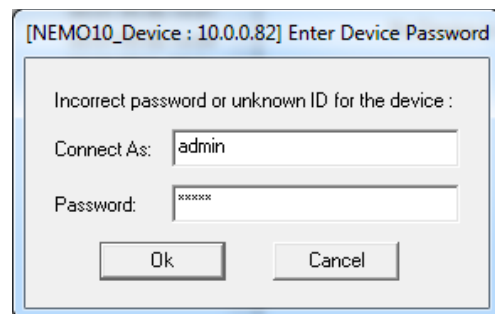
How to set up the Ethernet Receiver

It is recommended that the server be configured at the factory with a static IP address. If it has been pre-configured, the IP address will be on a printed label on the case. If your network rules dictate DHCP, a permanent lease can be set up on the DHCP server so that the receiver is always given the same IP address. The receiver default configuration is DHCP. If either of these is the case, skip to the next section to configure the software to connect to the new receiver. If the receiver needs an IP address, follow the steps in the rest of this section.

1. Install the Hello-Device Manager software on a computer that has network access. This software is on the installation CD or can be downloaded from the PST website. Install and then run the software.
2. Select the receiver power source. Slide the power switch toward the power port if the wall transformer is going to be used as the power supply. If POE is going to be used, slide the power switch towards the RJ45 Ethernet port.
3. Connect the receiver to the network and apply power.



4. Select Search and then Probe. The software will search the network for MAC addresses that it recognizes.
5. Check the box next to the receiver that you want to configure and then click the Add button. The device will show in the left column under device.
6. Double-click the receiver in the left hand column and its configuration information will be loaded from the device into the right-hand column.
7. The default user name and Password are admin. Enter admin, admin and then click "OK".





Predictive Sensor Technology

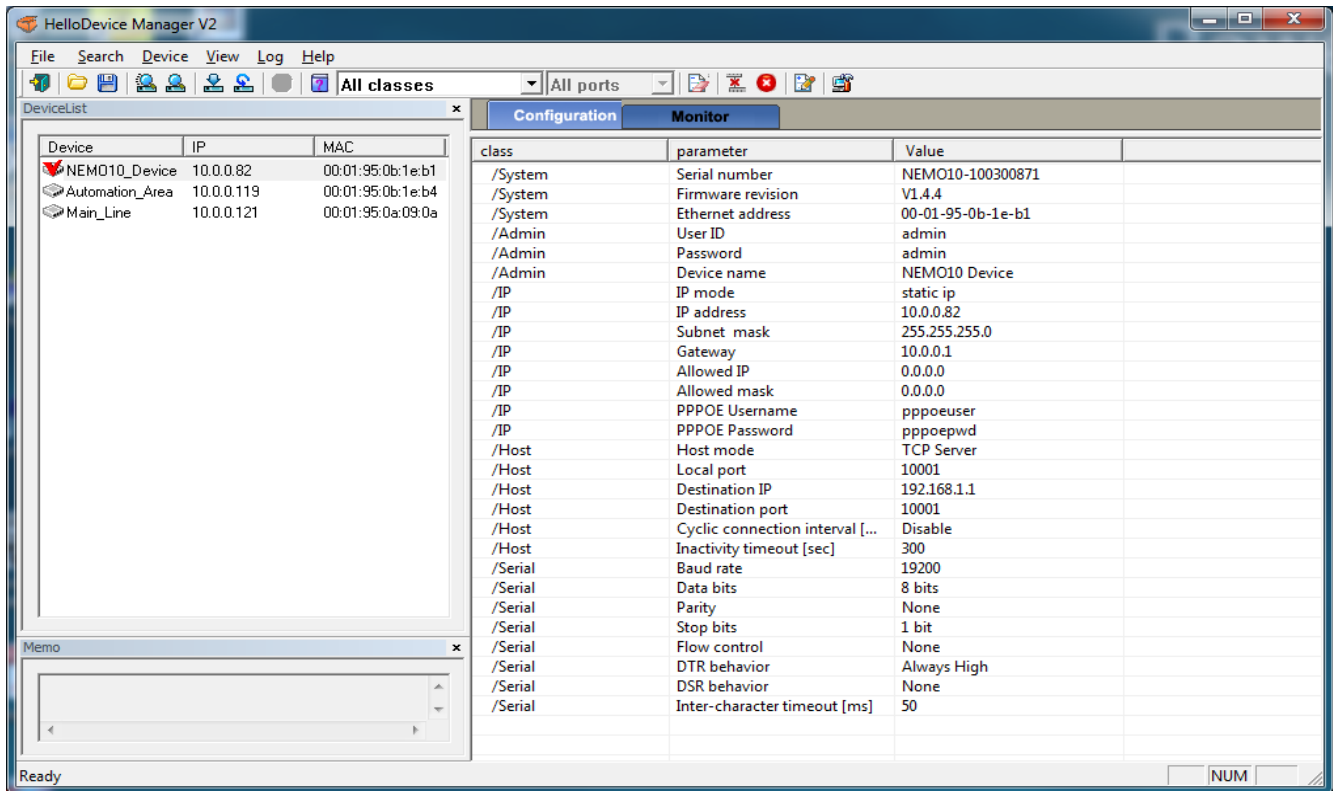
Wireless Condition Monitoring

www.PSensorTech.com

(888) 295-5321

316 North Main Street, Lynchburg, Ohio 45142

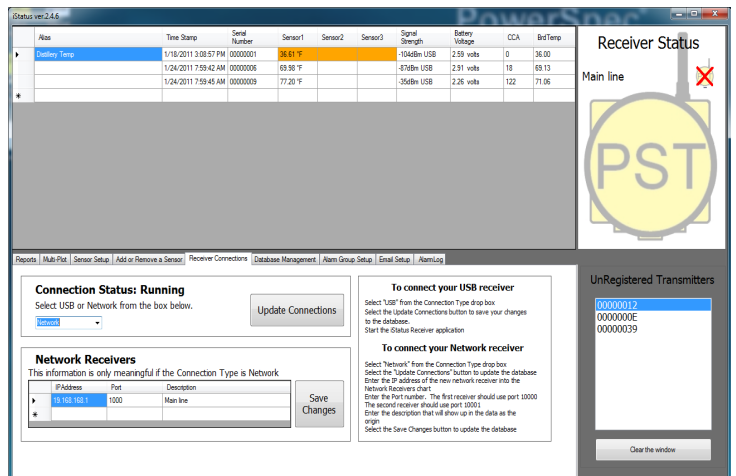
8. All of the configuration information is now available for you to edit.



9. Edit the IP address, Subnet mask and Gateway that are compatible with your network. Feel free to edit the Device name to something that is meaningful and change the User ID and Password. The other settings should not be changed.
10. Select Device and then Set from the top menu. This will save the changes and reboot the receiver.

Configure the software to connect to the new receiver

1. Start the iStatus interface software. If it has not been installed, install it per the instructions.
2. Open iStatus interface and select the receiver connections tab.
3. Select Network from the drop-down menu and then click Update Connections.
4. Enter the Receiver information in the Network Receivers box. The Port value should be unique if there are multiple network receivers in the system.





Predictive Sensor Technology

Wireless Condition Monitoring

www.PSensorTech.com

(888) 295-5321

316 North Main Street, Lynchburg, Ohio 45142

5. The description will show in the Signal strength field and will be saved in the database as the origin of all data that is associated with this receiver. Enter a descriptive name and select the Save Changes button.
6. Close and Restart the receiver application to force it to find the new receiver on the network.
7. Enjoy!

This device complies with Part 15 of the FCC Rules. Operation is subject to the following two conditions:

- 1) This device may not cause harmful interference, and
- 2) This device must accept any interference received, including interference that may cause undesired operation.

Changes or modifications not expressly approved by the manufacturer could void the user's authority to operate the equipment.

The Multi-Point Transmitter (MPT) is a low powered low bandwidth device that is designed for the monitoring of equipment and process parameters that change slowly over time. The factory default data update rate is 5 times per minute. This slow update rate allows this transmitter to enjoy a long battery life while maintaining a continuous watch on your equipment's health. The data rate is not suitable for control purposes and Predictive Sensor Technology does not recommend that it be used to control equipment.

This document was created with Win2PDF available at <http://www.win2pdf.com>.
The unregistered version of Win2PDF is for evaluation or non-commercial use only.
This page will not be added after purchasing Win2PDF.