



Predictive Sensor Technology

Wireless Condition Monitoring

www.PSensorTech.com

(888) 295-5321

316 North Main Street, Lynchburg, Ohio 45142

USB Receiver PST-Rx.USB

Description

900 MHz Ethernet receiver housed in an extruded and anodized aluminum and powered by the PC USB port. Each receiver can handle up to 150 transmitters. A single iStatus network can have only 1 usb receiver. If multiple receivers are needed, use the network receiver (PST-Rx.E).

Security

The iStatus Wireless sensor system is inherently secure. The simple transmitter/receiver architecture cannot be reconfigured to act as anything other than its intended function. The usb receiver is hard coded to simply pass packeted information to a location on the network. The receiver is not capable of wireless transmission.

Receiver

Temperature Range	-40°F to 185°F (-40°C to 85°C)
Radio Frequency	902 to 928 digitally modulated spread spectrum radio
Voltage	USB powered
Current	20 mA max



Predictive Sensor Technology

Wireless Condition Monitoring

www.PSensorTech.com

(888) 295-5321

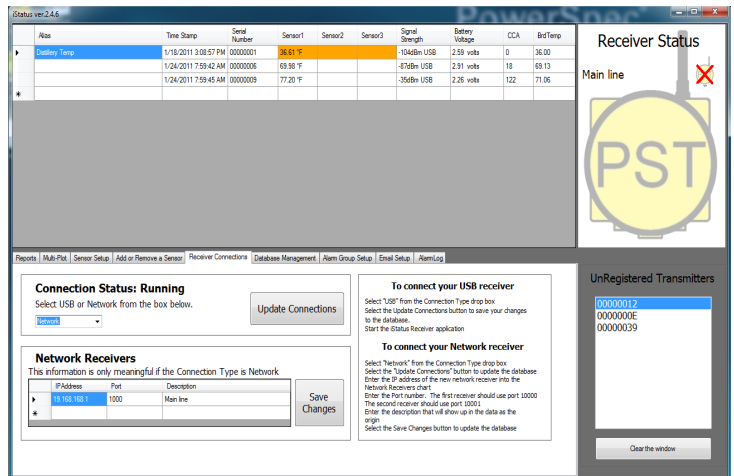
316 North Main Street, Lynchburg, Ohio 45142

How to set up the USB Receiver

USB is the default connection type for iStatus. If the receiver does not install automatically when it is plugged in, it may be necessary to install a usb driver. Go to the installation disc and run CDM20814.exe that is inside the USB_Driver.zip folder. iStatus will automatically discover the receiver, connect and start reading sensor data. The LED will blink when the USB connection is made and every time a reception is made.

Configure the software to connect to the new receiver

1. Start the iStatus interface software. If it has not been installed, install it per the instructions.
2. Open iStatus interface and select the receiver connections tab.
3. Select USB from the drop-down menu and then click Update Connections.
4. The description will show in the Signal strength field and will be saved in the database as the origin of all data that is associated with this receiver. Enter a descriptive name and select the Save Changes button.
5. Close and Restart the receiver application to force it to find the new receiver on the network.
6. Enjoy!



This device complies with Part 15 of the FCC Rules. Operation is subject to the following two conditions:

- 1) This device may not cause harmful interference, and
- 2) This device must accept any interference received, including interference that may cause undesired operation.

Changes or modifications not expressly approved by the manufacturer could void the user's authority to operate the equipment.

The Multi-Point Transmitter (MPT) is a low powered low bandwidth device that is designed for the monitoring of equipment and process parameters that change slowly over time. The factory default data update rate is 5 times per minute. This slow update rate allows this transmitter to enjoy a long battery life while maintaining a continuous watch on your equipment's health. The



Predictive Sensor Technology

Wireless Condition Monitoring

data rate is not suitable for control purposes and Predictive Sensor Technology does not recommend that it be used to control equipment.